



Osgoodby Cottage, Osgoodby

Thirsk

In Excess of £3,000,000



Osgoodby Cottage

Osgoodby, Thirsk

Osgoodby Cottage is a one of a kind property, sitting amongst five acres in an elevated position at the foot of Sutton Bank the current accommodation offers the main five bedroom house with leisure suite, a recently created complex including a one bedroom, self contained annex, office, garages and all weather arena.

The elevated position provides spectacular views across the Vale of Mowbray. Local celebrated author and vet James Herriot gave the view from Sutton Bank the ultimate accolade “England’s Finest View” and at Osgoodby Cottage it is from your window.

Main House

The five bedroom family home spans around 4000 sq feet and comprises of multiple reception areas including separate living room with log burning stove and smaller snug to escape when needed. The leisure suite occupies one side of the main house and the bifold doors can be opened to allow the outside in and open to the views beyond. Also allowing the swimming pool and sauna access to the outdoor entertaining and bbq areas.

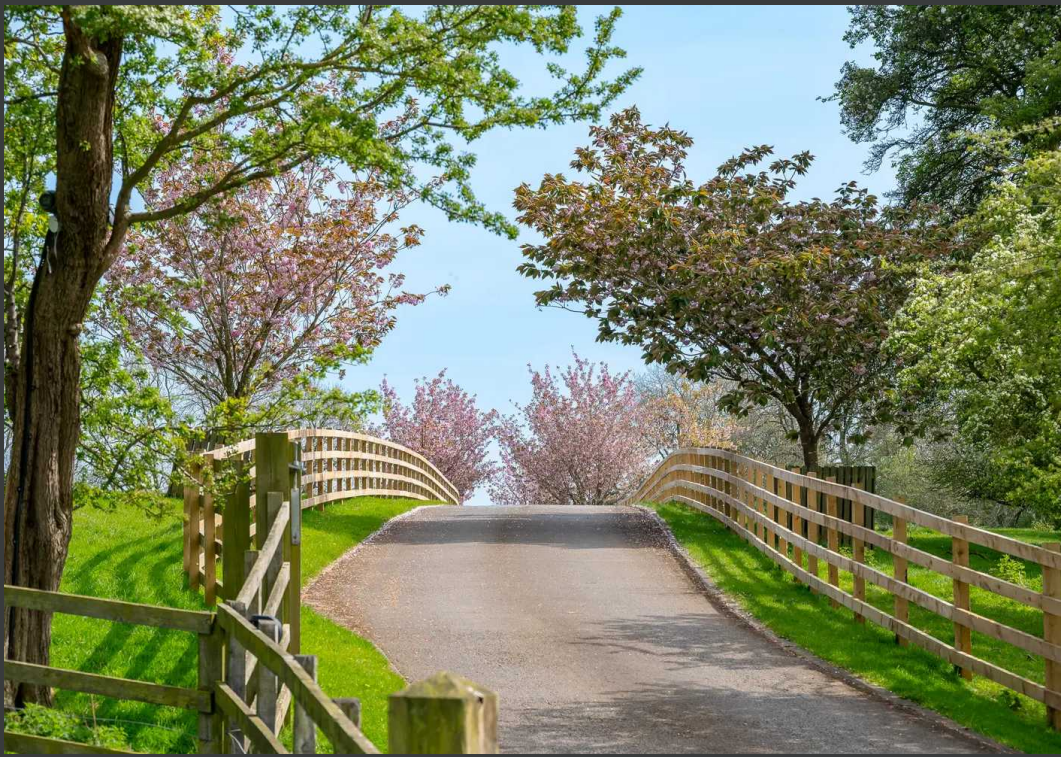
Annex and Outbuildings

The additional complex offers a further 3500 sq ft is accessed from the courtyard and comprises of living kitchen, bedroom and ensuite bathroom. Adjoining the annex is a home office with boot and utility room, car port, double garage additional external storage.

Services









GARDEN

Externally the property has immaculately maintained gardens and offers many outdoor entertaining areas to enjoy the view, not least the stone built round house with log burning stove for chilly summer evenings. The menage sits behind the property with access both from the drive and the house. To the bow of the garden is a large decked area with sunken hot tub.

GARAGE

8 Parking Spaces

Courtyard, carport and multiple garages available.



Osgoodby cottage

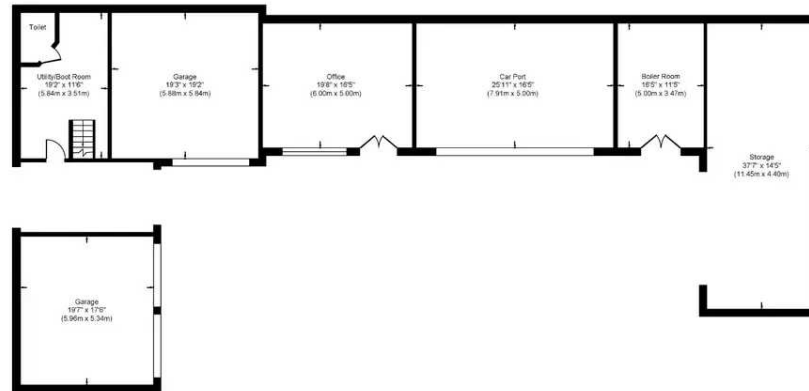
Approximate Gross Internal Floor Area = 697.8 sq m / 7512 sq ft

Main House L1 Area = 233.2 sq m / 2511 sq ft

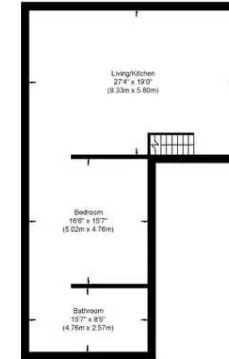
Main House L2 Area = 134.5 sq m / 1448 sq ft

Ground Floor Area = 244.1 sq m / 2628 sq ft

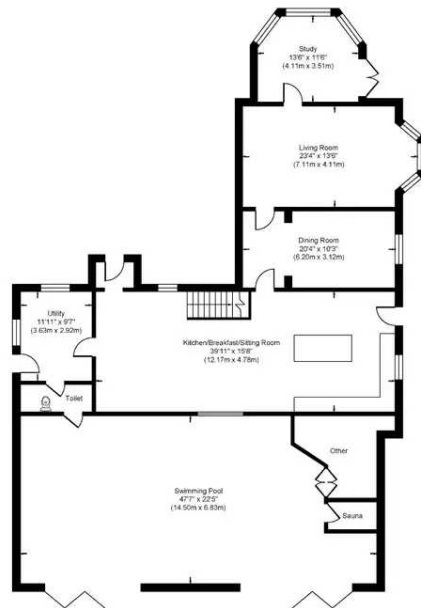
First Floor Area = 85.8 sq m / 924 sq ft



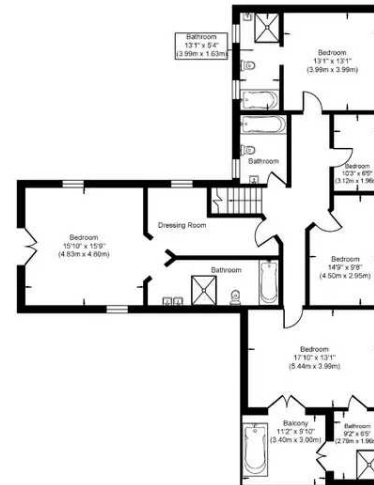
Ground Floor



First Floor



Main House L1



Main House L2

Illustration for identification purposes only, measurements are approximate, not to scale.



NOVE



Nove

9 Bridge Street, Thirsk - YO7 1AD

01845407047

thirsk@noveproperty.co.uk

noveproperty.co.uk

